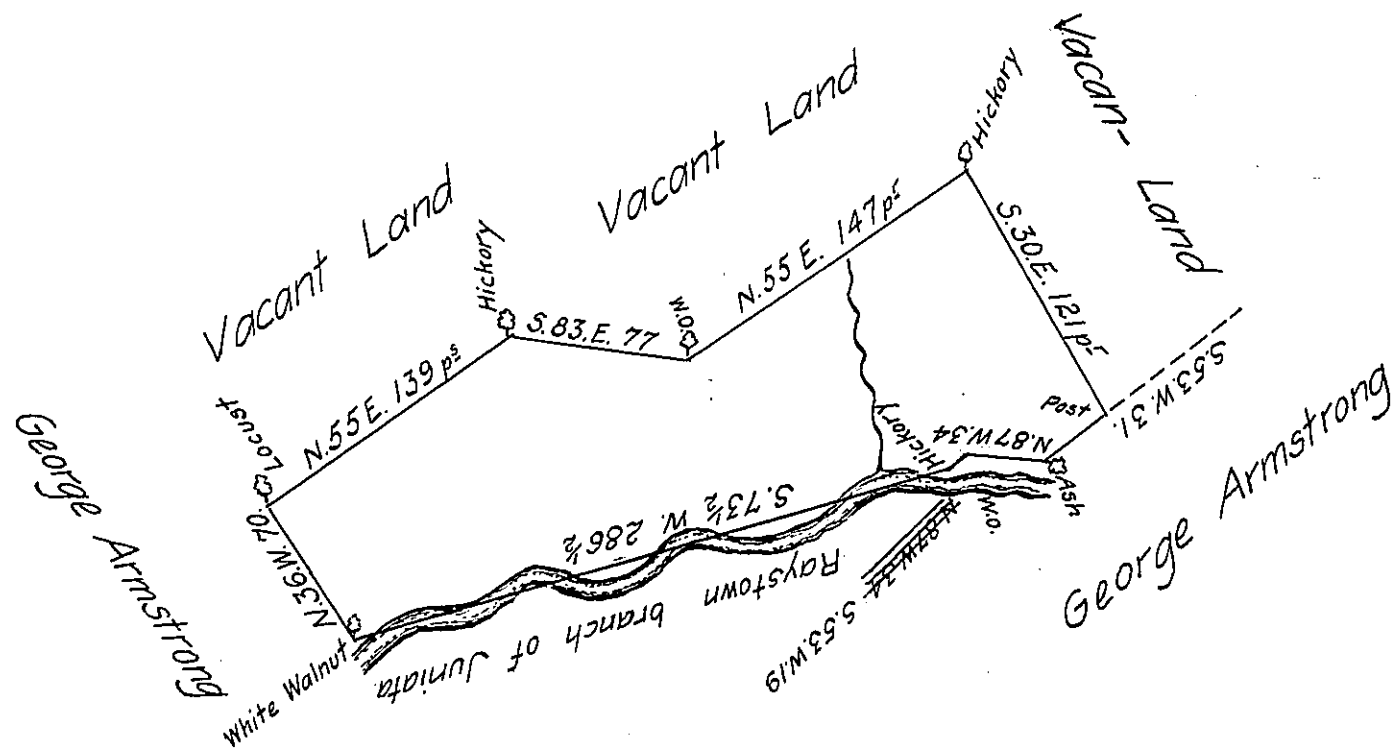


FORM NO. 1.



A Draught of a tract of land situate on the North side of the Raystown branch of Juniata about fourteen miles from Bedford in the County of Cumberland, containing one hundred and ninety nine acres and three quarters and the usual allowance of six acres pCt. for Roads &c<sup>s</sup> Surveyed 26 June 1767 for Samuel Black In pursuance of an order N<sup>o</sup> 3181 dated the 25<sup>th</sup> day of March 1767.  
To John Lukens Esq<sup>r</sup> Surveyor General. p-Richard Tea Dep<sup>y</sup> Survey<sup>r</sup>

I do certify that the above was copied from the original filed in the Surveyor Generals Office agreeable to the Provisions of the Act passed the 16<sup>th</sup> Feby. 1833 entitled "An Act to preserve the title to the Donation and other lands in the Commonwealth of Pennsylvania" for the files of the Office the 15<sup>th</sup> day of May 1835.

Jacob Spangler S.G.

IN TESTIMONY that the above is a copy of the original remaining on file in the Department of Internal Affairs of Pennsylvania, made conformably to an Act of Assembly approved the 16th day of February, 1833, I have hereunto set my Hand and caused the Seal of said Department to be affixed at Harrisburg, this eighteenth day of September 1906.

*George R. Brown*  
Secretary of Internal Affairs.